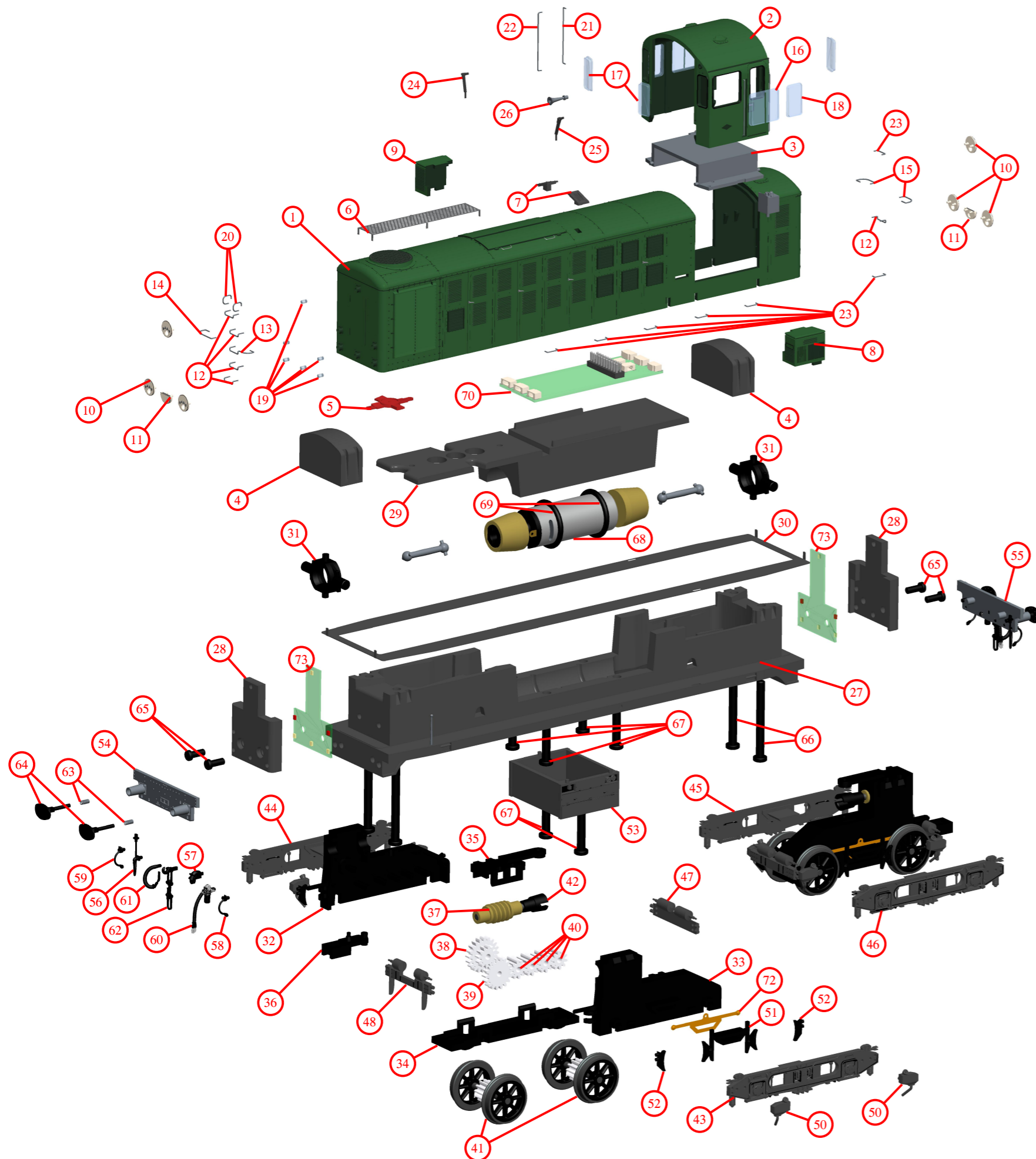


# Class 16 Spareparts



- |                                |                                      |
|--------------------------------|--------------------------------------|
| 1. Body Class 16               | 41. Axle with wheels and 12Z pinion  |
| 2. Drivers Cabin               | 42. Cardan Join Gearbox              |
| 3. Interior Class 16           | 43. Bogie Front                      |
| 4. Attachment Body             | 44. Bogie Back                       |
| 5. Fan On Roof                 | 45. Bogie w. speedometer             |
| 6. Walkway On Roof             | 46. Bogie w. mileometer              |
| 7. Exhaust On Roof             | 47. Bogie beam Back                  |
| 8. Cabin Box Left Side         | 48. Bogie beam Front                 |
| 9. Cabin Box Right Side        | 49. Sandbox Right                    |
| 10. Headcode Disc Full Round   | 50. Sandbox Left                     |
| 11. Headcode Disc Half Round   | 51. Bogie Brakes                     |
| 12. Steps Metal Wire           | 52. Bogie Brake Single               |
| 13. Steps Front Corner         | 53. Battery Box                      |
| 14. Front Handrail             | 54. Bufferbeam front                 |
| 15. Back Handrail              | 55. Bufferbeam back                  |
| 16. Big Window                 | 56. MU Jumper with cable             |
| 17. Small Window               | 57. MU Jumper receptacle             |
| 18. Window By Door             | 58. Air Control Pipe, right          |
| 19. Headlight Clear Part       | 59. Air Control Pipe, left           |
| 20. Handrail Top Front         | 60. Steam pipe                       |
| 21. Handrail Driver Cab Middle | 61. Vaccum pipe                      |
| 22. Handrail Driver Cab Front  | 62. Screw Coupler                    |
| 23. Handrail Along Side        | 63. Buffer Spring                    |
| 24. Wiper Left                 | 64. Buffer B3 (Oval)                 |
| 25. Wiper Right                | 65. Screw 2 x 5 mm.                  |
| 26. Horn                       | 66. Screw 2.5 x 28 mm.               |
| 27. Chassis Class 16           | 67. Screw 2.5 x 15 mm.               |
| 28. Light Cover                | 68. Motor w. flywheel, wire and plug |
| 29. Motor Mount Top            | 69. Rubber O-rings for motor         |
| 30. Walkway Etch Metal         | 70. PCB 21 pin w. connectors         |
| 31. Suspension Bridge          | 71. Dummy plug 21 pin                |
| 32. Gearbox Right              | 72. Contact wipers w. wire and plug  |
| 33. Gearbox Left               | 73. PCB w. 4 smd led                 |
| 34. Gearbox Bottom             | 74. Interior Panel CL 16             |
| 35. Gearbox Top                | 75. Cardan Shaft                     |
| 36. NEM Socket UK              |                                      |
| 37. Worm gear w. shaft         |                                      |
| 38. Spur gear Z20 - Z12        |                                      |
| 39. Pinion gear Z18            |                                      |
| 40. Pinion gear Z10            |                                      |